

AD
AUTODELEN.NET



eHUBS-project

6th of May 2022

SOLUTIONSPlus & MOBI-MIX
training on shared e-mobility



AGENDA

- 1. Autodelen.net**
- 2. About the project**
- 3. Results**
- 4. Upscaling actions**
- 5. Q&A**





Autodelen.net

We promote and support the **alternate use of transport modes**. We want to meet everyone's mobility needs **efficiently** with a **minimum of space occupation, optimum use of raw materials** and a positive impact on the **quality** of our **living environment**.

Part of Flemish Mobihub association

Three horizontal purple bars of varying lengths, stacked vertically on the right side of the slide.

THEMATIC PRIORITY:

 **LOW
CARBON**



PROJECT
AREA



Project objectives: eHUBS will demonstrate that shared and electric shared mobility (e-bikes, e-scooters, e-cargobikes, and electric cars) are affordable and attractive alternatives to private cars. eHUBS will contribute to less emissions, less car use, and to the critical mass needed for the business case of electric and shared mobility





eHUBS are...

1. Clusters of shared *electric* mobility
2. Tailored to local conditions and needs
3. Linked in a network
4. Available in different sizes
5. Integrated in MaaS ecosystems



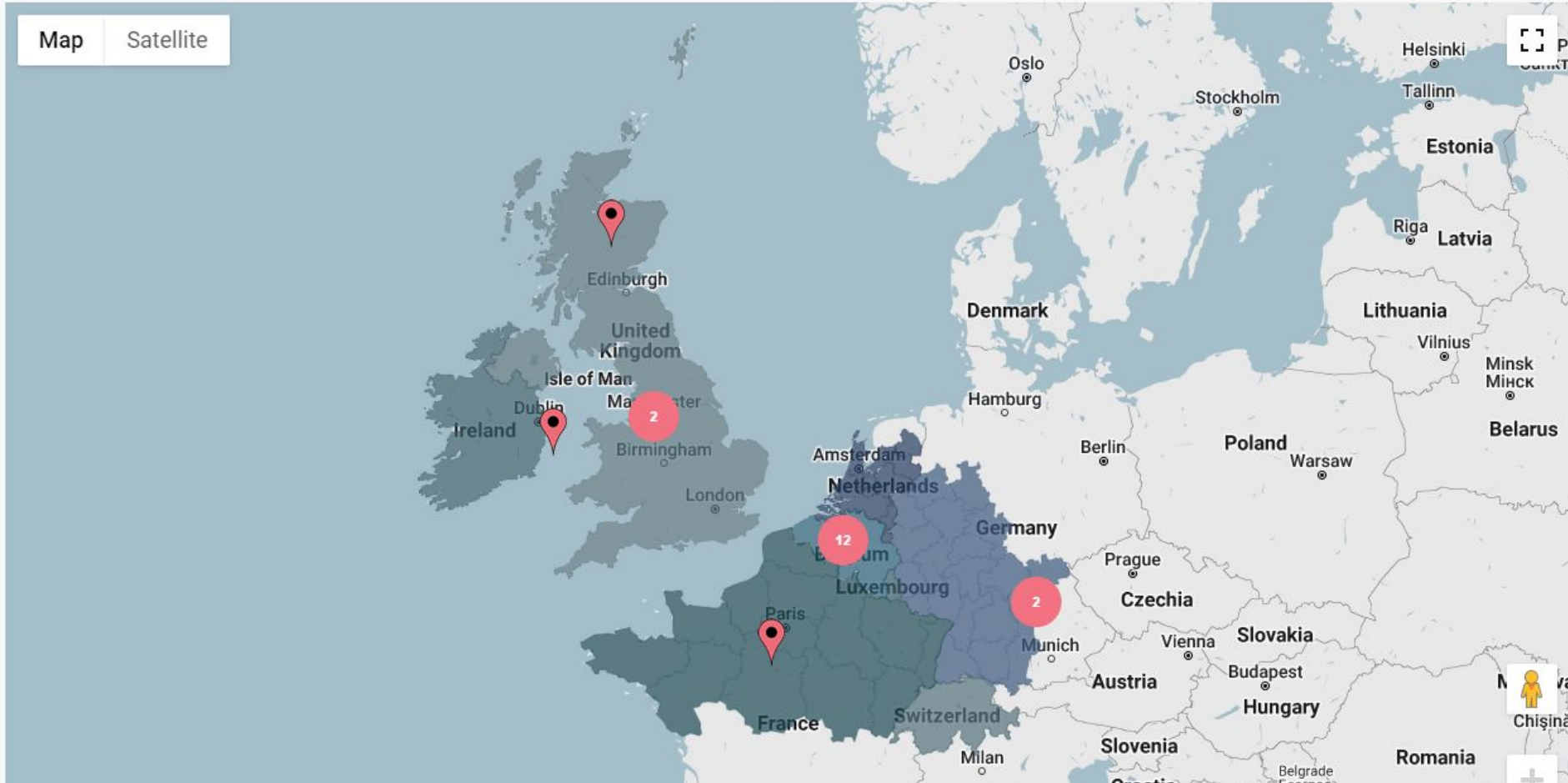


eHUBS are...

1. 125 eHUBS
2. 10 pilot locations
3. >2500 LEV
4. Toolkit
5. Research

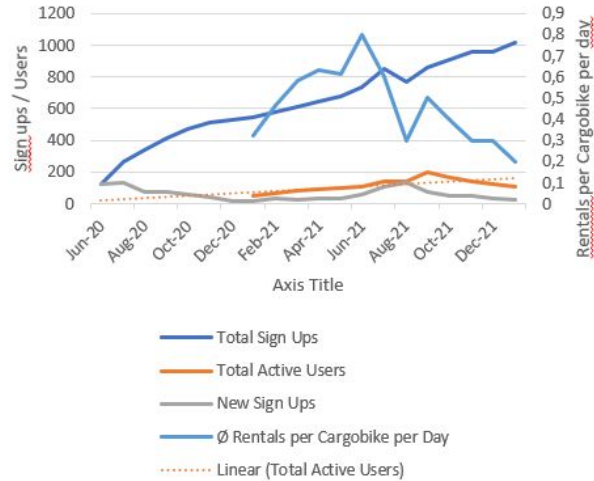


Project Partners

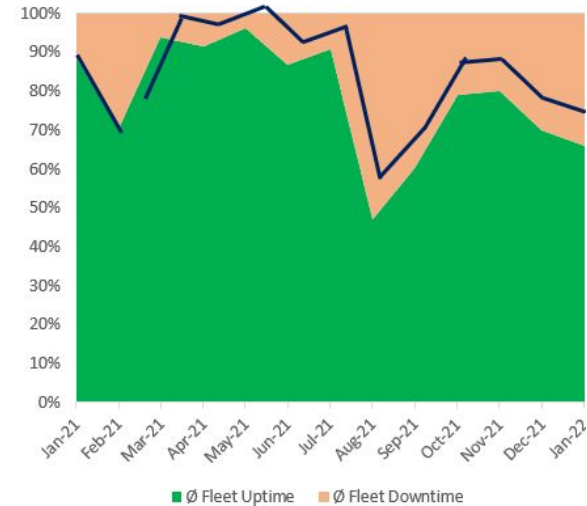


	Fleet size	Rides per vehicle per day (indicative)	# active users (per month)
Urbee (sept-oct '21)	26	0,22	Sept: 81 Oct: 57
Cargoroo (2021)	30	0,48	Oct: 168 Nov: 141
Blue-bike (2021)	124	0,44	From 1078 (feb) to 3049 (oct) users per month (2021)
Cambio (2021)*	129	1,25	3393 (2021)
Partago (2020)	5	0,52	64 (2021)

Overview

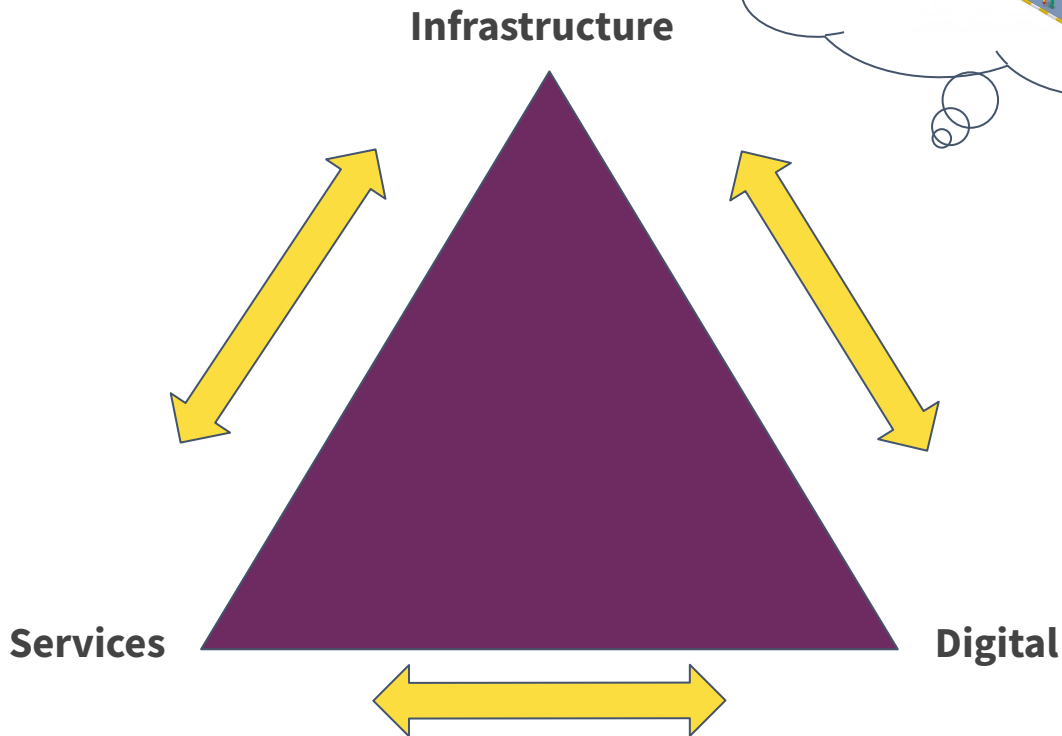


Availability



- Average number of Rides per Bike per Day (2021) = 0,48
- Average distance per ride (oct '21 – jan '22, data before not available) = 5,5 km

Upscaling action 1: created even better eHUBS





INFRASTRUCTURE

- 1.** Accessibility is a transversal objective
- 2.** Design based on pedestrians
- 3.** Sufficient (outsized) bike parking
- 4.** Charging infrastructure for (shared) cars and (shared) bikes/e-scooters/mopeds
- 5.** Signage





Services

1. Top down - bottom up
2. Public transport = backbone
3. Additional (shared) mobility services
4. Additional services





Digital

1. Data standards
2. Open data
3. MaaS-developments



Upscaling actions 2: towards (public) MaaS?



Source: Kolombus



Source: Jelbi

Upscaling actions 3: nudging and communication



Deze organisaties zijn (nog) niet zichtbaar op de kaart: Flexigo (Poperinge), Getaround (België), GreenMobility (Gent, Antwerpen, Brussel) en Wibee (Brussel en Wallonië).

Landkaart Lijst

Instelvoorwaarden Reserveren Mogelijke auto-opties Mogelijke auto-modellen Ophalen/terugbrengen Betalen

SELECTIE FILTER WISSEN

Map Satelliet Locator

Legende (klik op de icoontjes om te filteren)

- Alle organisaties
- Clauz2you
- Stappo in
- SHARE Mobility
- Poppy
- Pertago
- Cozywheels
- Coopstrroom
- EastMobility
- cambio
- Déjagé



Bereken jouw autodeelvoordeel

Is autodelen ook voor jou financieel interessanter dan een eigen wagen?



START



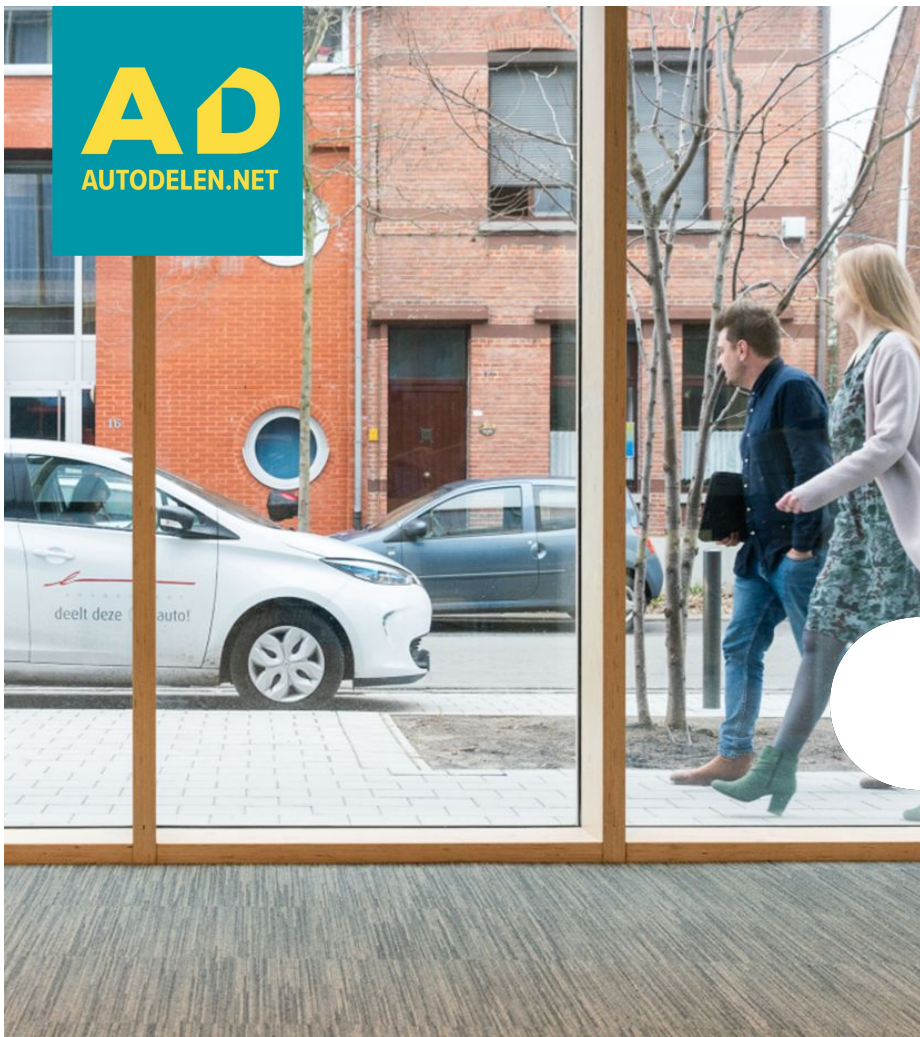
Upscaling actions 4: for everyone



(Hopefully) Future EU-collaborations

- 1. Share North Squared (NSR)**
 - 2. ShareDimobihub (NSR)**
 - 3. SMAPE (Interreg Europe)**
- ...





Thank you!

Questions?

Bram Seeuws

Bram@autodelen.net

+32 478 44 07 23

<https://www.linkedin.com/in/bram-seeuws-5b27b6a2/>

